



EMMAUS COLLEGE



ASSISTANT PRINCIPAL LEARNING AND INNOVATION

Application Package
August 2020

OUR COLLEGE MISSION



Emmaus College, a Christ-centred community, provides a caring and supportive environment that enables students to develop their full potential in all areas of life.

The College Aims to:

- give witness to Catholic belief, liturgy and community;
- establish a Christian atmosphere that fosters self-worth and respect for others;
- provide an effective and dynamic learning environment;
- demand excellence in professional practice and in the provision of learning experience;
- complement the work of parents in the formation of their children.

Our school charism and motto, "To Know Christ", comes from the story of the Walk to Emmaus found in Luke's Gospel.

OUR COLLEGE VISION

Emmaus, as a Christ-centred Community, has fundamentally at the heart of its spirituality, the person of Jesus Christ. The story of the Walk to Emmaus in the Gospel of Luke and from which the College is named, nourishes our spirituality. It is a relationship with God that can enable a person to make sense of life and live it fully. Furthermore, it is through journeying with, and in relationship with Christ, which deepens and enriches the relationship with God.

Were not our hearts burning within us while he was talking to us on the road, while he was opening the scriptures to us? (Luke 24: 32)

Our relationship with God through Jesus is not a lone journey, but one that is nourished and deepened through belonging to the community of faith, the Catholic Church.

The four Houses: Chavoin, Colin, More and Rice supplement the spirituality of the College. These Houses call to mind the charisms of their namesakes, encouraging the members of the House to explore how they too can live their Christian calling.

The College encourages students to live by the key core values of faith, knowledge and service and to assist them to achieve their best academically.

Emmaus College is proud to be a co-educational Catholic school, and we strongly believe that co-education has clear benefits for the vast majority of students. In the contemporary society in which we live, it makes perfect sense for young people to be together in a co-educational environment during their formative teenage to young adult years. We believe that this best prepares students for their post-school life.

Emmaus College aims to ensure that students are able to acquire the skills necessary for 21st century learning, especially the four Cs of Critical Thinking Skills, Communication, Collaboration and Creativity. These skills will enable students to be flexible in their problem-solving methodology, have enhanced thinking abilities and a collaborative attitude to communication. Students need to develop these skills alongside the foundation skills of literacy and numeracy.

Wellbeing is the total climate of pastoral care arising out of the action taken by the College to promote and enhance student wellbeing of a personal, social, physical,

emotional, mental and spiritual nature. Key elements of student wellbeing are positive self-regard, respect for others, positive relationships, responsible behaviours, personal resilience and engagement with learning.

Our mission as a Christ-centred community, provides a caring and supportive environment that enables students to develop their full potential in all areas of life.



COLLEGE OVERVIEW

Emmaus College opened in February 1980. It was established from the amalgamation of St Thomas More College (1968–1979) at Forest Hill and Chavoin College (1966–1979) at Burwood. While the school is relatively new, it has benefited from the rich traditions of the two Colleges.

Emmaus College was established to provide co-educational choice for Catholic families from parishes in our region. These originally included:

St Michael's, Ashburton; St Scholastica's, Bennettswood; St Philip's, Blackburn North; St Thomas the Apostle, Blackburn; St Luke the Evangelist, Blackburn South; St Benedict's, Burwood; Our Lady of Victories, Camberwell; St Cecilia's, Camberwell South; St Timothy's, Forest Hill; Holy Saviour, Glen Waverley North; St Christopher's, Syndal; Our Lady of Perpetual Succour, Wattle Park.

The College now also welcomes Catholic children from priority parishes: St John the Baptist, Ferntree Gully; St John's, Mitcham; St James', Vermont; St Jude's, Scoresby; Holy Trinity, Wantirna South and St Luke's, Wantirna. Catholic students from non-priority parishes may be accepted on pastoral grounds. Enrolment guidelines also allow for non-Catholic children, should places be available.

The College occupies two sites. The Vermont South Campus (Years 7-12) is on a spacious and attractive twenty-two acre setting with two playing fields, basketball and tennis courts and a double court multi-





purpose stadium for indoor sports. It has six significant buildings less than 16 years old – Senior Learning Centre, Performing Arts Centre, Science Technology Centre, Administration/Learning Centre, Sports Stadium and Fitness Room. Mid-2017 saw the completion of the Galilee Centre which houses a 250-seat lecture theatre, language classrooms, Educational Support, VCAL, Careers and Psychologists.

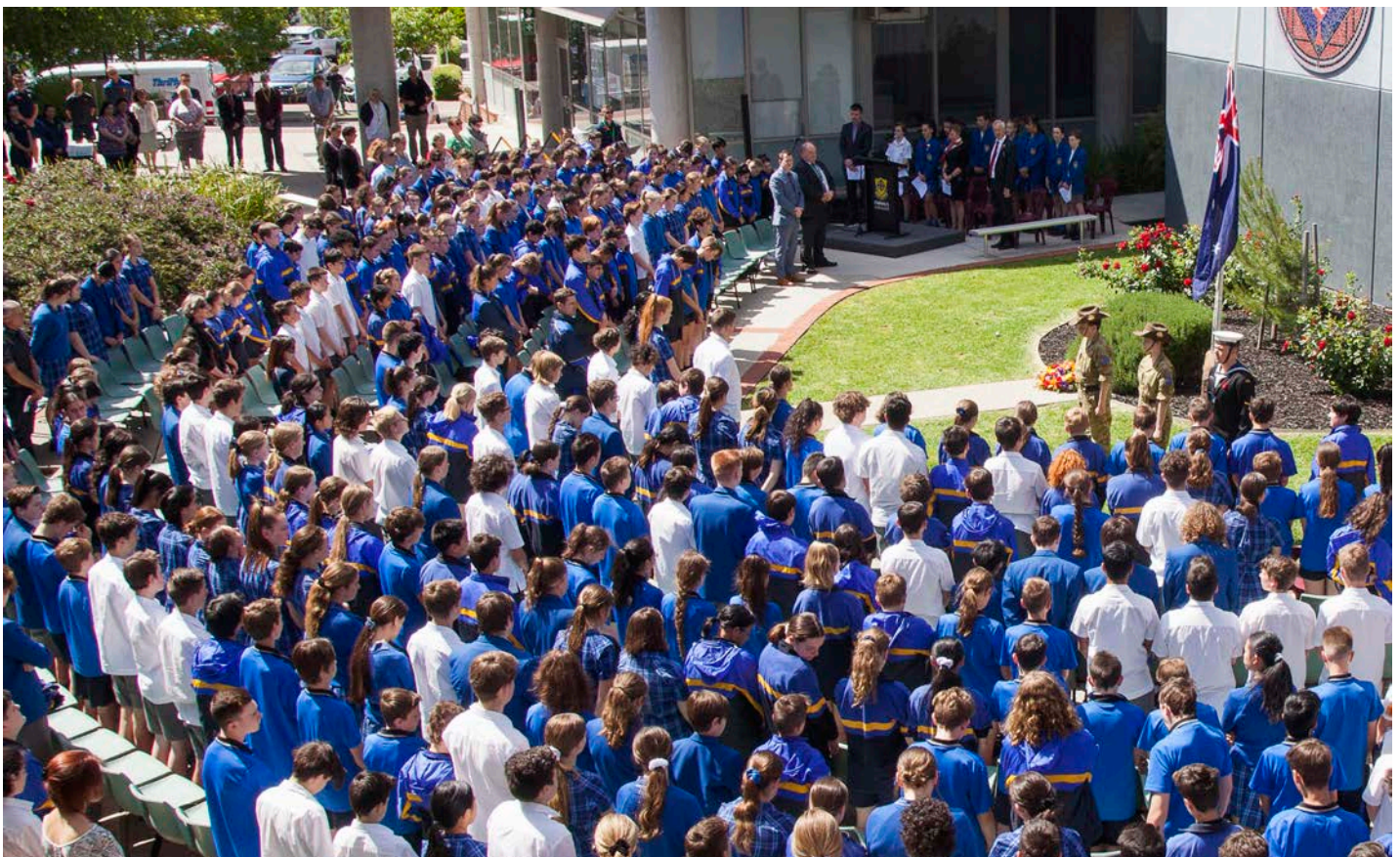
Older buildings at the College have all undergone substantial renovations in recent years. In 2018, planning commenced on the Creative Industries Building (Music and Digital Media).

The Burwood Campus (Y9@E) caters for Year 9 students and is situated in Warrigal Road, Burwood, next to St Benedict's Church. This pivotal year in secondary education offers students a range of engaging educational and 'life-learning' programs to better prepare them for their senior years and opportunities as young adults. The program is a great success and seen as a real bonus for our students.

Emmanuel College offers a broad curriculum designed to cater for the needs and abilities of all students.

- There is a full one-to-one ICT device program for students at the College;
- There is an extensive co-curricular program including:
 - a range of excursions and incursions across many subjects and Year Levels;
 - compulsory camps for students in Years 7-9 and Year 12;
 - Outdoor Education (Year 10);
 - Student Leadership;
 - Robotics Club;
 - Social Justice Initiatives;
 - Public Speaking and Debating;
 - Language and Sister School Exchange Programs;
 - a range of interstate and overseas tours offered each year including Europe, Indonesia and the United States of America.

- Emmaus has a long established and respected VCAL program for students in Years 11-12, who are more focussed on practical career pathways post-secondary education.
- VET/Dual Recognition programs are conducted in conjunction with Box Hill and Holmesglen Colleges of TAFE, and through the Mullum Cluster of Schools.
- Emmaus has an excellent reputation in the Performing Arts, with the College Production each year being a major highlight. Each show is usually a sell-out and the school has received many Theatre Guild and Lyrebird Awards in recent years.
- An extensive Music program is offered from Year 7 to VCE. At Years 7-8 Music is a compulsory subject. A number of ensembles practise and perform regularly.



OUR FUTURE

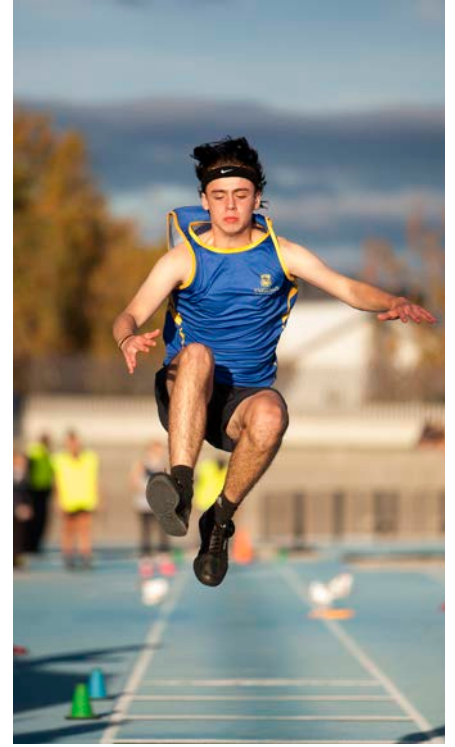


Construction is due to commence late this year on our new Creative Industries Building, which will house Music and Digital Media.

From humble beginnings, we are now a very well-known and respected school in our community. This year, the 40th Anniversary of our College, provides an opportunity to reflect on our journey, and more importantly look forward with great optimism to our future.



ROLE DESCRIPTION



Expressions of interest from outstanding and inspirational educational leaders are sought for the position of Assistant Principal, Learning and Innovation.

The full Role Description is provided [HERE](#).

